

# SANTÉ™

FOR RESTAURANT PRO

VOLUME 13.1  
ABC 2009



annual  
buying  
guide

'09

**2009:**  
**Santé Restaurant**  
**Symposium**  
.....  
**Register &**  
**save \$200!**



industry  
trends

santé awards  
wrap-up

[isantemagazine.com](http://isantemagazine.com)

# wine (united states)

**wine** is evaluated on a variety of criteria, including price/value ratio, pairability, drinkability, and availability. Each review contains a brief description of the characteristics of the wine, followed by general pairing suggestions.

Wines are listed in four wholesale price categories:

- value** \$100 or less per case
- moderate** \$101 to \$150 per case
- premium** \$151 to \$200 per case
- prestige** more than \$200 per case

Wholesale full- or half-case prices are included with every wine review and represent an average national price.

The aging potential of each wine is designated by one of the following:

- ☞ buy and serve youngest vintage available
- ! fully mature, serve now
- ! — can serve now, but will hold for some time
- can serve now, but will improve with age
- ! indicates an excellent by-the-glass choice

## california central coast

### white

other white and white blends

#### moderate



**Ca' del Solo 2007 Muscat Estate Vineyard / Monterey** 93% *Moscato Giallo*, 7% *Loureiro* Medium bodied with aromas and flavors of wild rose, melon, and white peach; soft acidity and a long, honeyed finish. Soft sheep's milk cheese or aperitif. ! !  
*Bonny Doon Vineyard, 831-425-3625, \$150/case*

#### premium



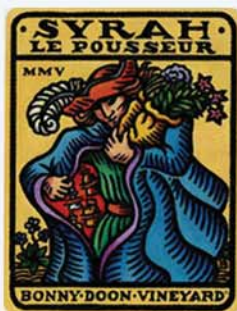
**Ca' del Solo 2007 Albariño Estate Vineyard / Monterey County** 80% *Albariño*, 15% *Loureiro*, 5% *Treixadura* Bouquet of grapefruit rind, mustard seed, and lavender; minerality and notes of lime, chalk, and almond on the palate. Light bodied with a tart finish. Sea bass. ☞  
*Bonny Doon Vineyard, 831-425-3625, \$160/case*

### red

#### syrah/shiraz

All wines are 100% Syrah/Shiraz, except where noted.

#### moderate



**Bonny Doon 2005 Le Pousseur** 96% *Syrah*, 4% *Grenache* Rich aromas and flavors of sharp, spicy black pepper and dark red fruit; full bodied with tannins that soften quickly. Great mouth-feel with a delicious medium spice finish. Grilled swordfish.

! —  
*Bonny Doon Vineyard, 831-425-3625, \$144/case*



# wine (united states)

**wine** is evaluated on a variety of criteria, including price/value ratio, pairability, drinkability, and availability. Each review contains a brief description of the characteristics of the wine, followed by general pairing suggestions.

Wines are listed in four wholesale price categories:

- value** \$100 or less per case
- moderate** \$101 to \$150 per case
- premium** \$151 to \$200 per case
- prestige** more than \$200 per case

Wholesale full- or half-case prices are included with every wine review and represent an average national price.

The aging potential of each wine is designated by one of the following:

- ☐ buy and serve youngest vintage available
- ! fully mature, serve now
- ! — can serve now, but will hold for some time
- can serve now, but will improve with age
- ! indicates an excellent by-the-glass choice

## other california appellations

All wines are from the general appellation of California, except where noted.

### white

#### other white and white blends

##### premium



##### Bonny Doon 2006 *Le Cigare Blanc*

75% Grenache Blanc, 25% Roussanne

Concentrated fruit with aromas and flavors of white peach, citrus, and floral notes; light to medium bodied with excellent balance and a moderate, zesty finish. Grilled scallops. ☐

Bonny Doon Vineyard, 831-425-3625, \$186/case

#### other red and red blends

##### prestige



##### Bonny Doon *Le Cigare Volant* 2004

38% Grenache, 35% Syrah, 12% Mourvèdre, 8% Carignan, 7% Cinsault Bright aromas and flavors of red berry fruit with notes of iron. Satisfying acidity and tannins with bramble fruit on the finish. Salmon glazed with honey and soy. ! —

Bonny Doon Vineyard, 831-425-3625, \$240/case

### rosé

##### moderate



##### Bonny Doon 2007 *Vin Gris de Cigare*

47% Grenache, 27% Cinsault, 14% Syrah, 7% Grenache Blanc, 5% Roussanne

Salmon pink in color with aromas of strawberry and raspberry; light bodied with a dry, clean red berry and citrus finish. Aperitif. ☐

Bonny Doon Vineyard, 831-425-3625, \$112/case